

Do North. New North.

Encompassing innovation and strategic partnerships

new north at a glance



1.3M

New North's population



22%

of Wisconsin's population,
employment and GDP



667k

Total regional
employment



\$81.2B

Annual Gross
Regional Product

innovation & technology



RANKED

#18

Ranked 18 out of 122
places for innovation.*

*Jump-Starting America



TITLETOWNTECH

Home to the Green Bay Packers Mentor-
Protege Program and many early stage,
high-growth innovators



CONNECTED

5G High Speed Broadband canvases
the Region

education & upskilling



New North Talent Hub

Central location for job
seekers and employers;
highlights region's
robust industry
alliances; first region
in the nation to launch
the Microsoft gener8tor
Upskilling initiative

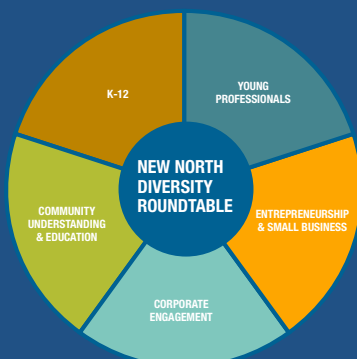
cost of living



19%

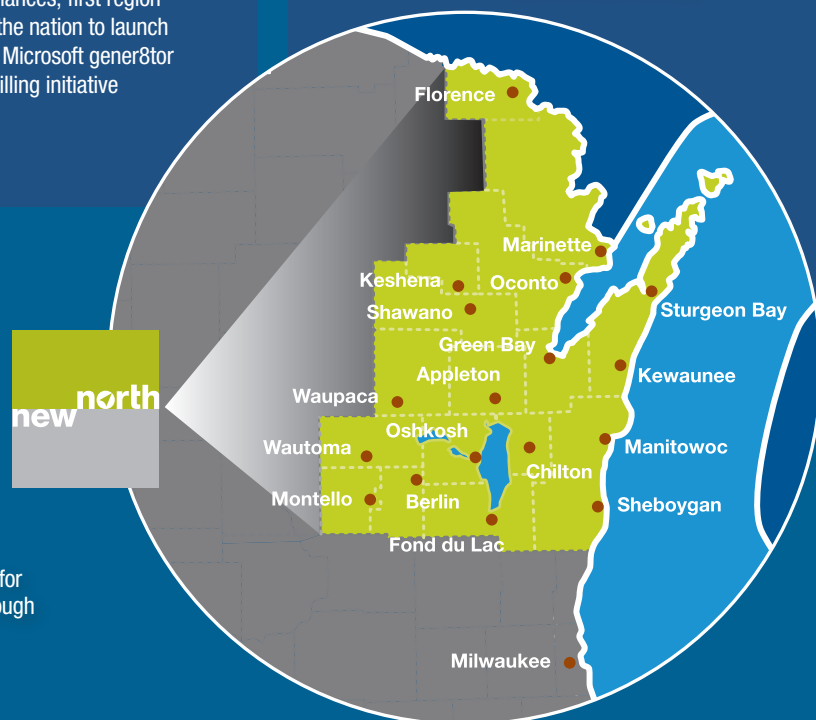
lower than the national
average, and **9%** lower
than the state average.

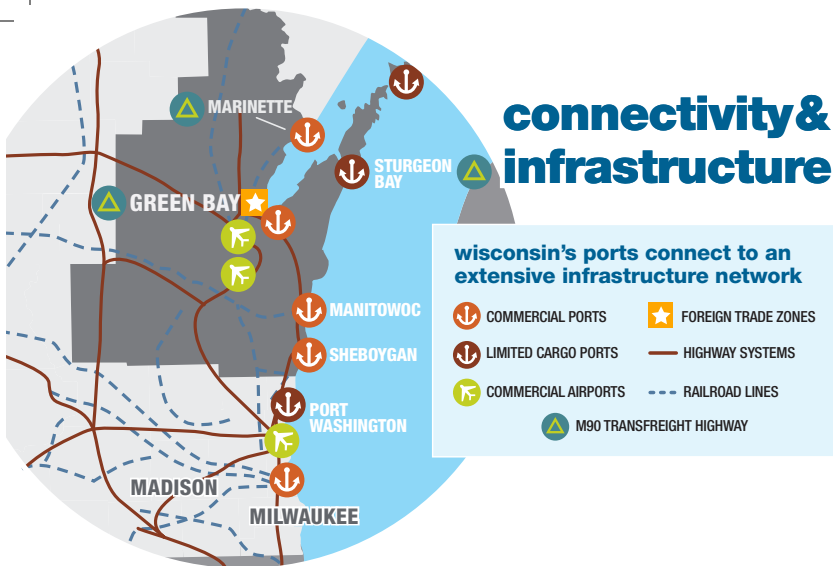
equity, diversity, inclusion



OUR MISSION

New North – to be a catalyst for
regional prosperity for all through
collaborative action.





connectivity & infrastructure

Proud of the national and global companies we keep

Sample List:

Acuity	Kimberly-Clark Corp.	Plexus Corp.
Agropur, Inc.	Kohler Co.	Procter & Gamble Paper Products
Ahlstrom-Munksjo	Komatsu	Reinhardt Foods
Alliance Laundry Systems LLC	Körber	Rockline Industries
Amcort	Lakeside Foods	Rockwell Automation
Ameriquip	Land O' Lakes	Saputo Cheese
Ariens Co.	MarineMax/Cruiser Yachts	Sargento Foods, Inc.
BelGioioso Cheese	Marine Travelift	Satori Cheese
Belmark Inc.	Marquis Yachts	Schneider
Brakebush Brothers	Masters Gallery Foods	Schreiber Foods
FTI (Faith Technologies, Inc.)	McCains Foods	Secura
Fincantieri Marinette Marine Corp.	Menasha	Strum Foods
Fives Giddings & Lewis	Mercury Marine	Therma-Tron-X, Inc.
Generac	Michel's Corp.	Thrivent
Georgia-Pacific	Microsoft	U.S. Venture
Green Bay Packaging	Miller Electric Mfg.	UnitedHealth Group
Green Bay Packers	Neenah Foundry	Valmet
Gulfstream Aerospace Corp	Nemak	Vollrath
Hatco Corp.	Nestle USA	Waupaca Foundry
Humana, Inc.	NEW Industries	WEC Energy Group
JBS	NEW Plastics	Werner Electric
Jewelers Mutual	Nicolet Plastics	Wilson-Hurd Manufacturing
J. J. Keller & Associates, Inc.	Nueske's	Wisconsin Aluminum Foundry
Johnson Controls	Oshkosh Corp.	WS Packaging
Johnsonville Sausage, LLC.	PCMC-Barry-Wehmiller Co.	
KI Inc.	Pierce Manufacturing	

top new north industries

manufacturing

The New North Region is home to one of the highest manufacturing concentrations in the nation.

Nearly

25%

of all Wisconsin manufacturing careers

More than

27%

of all Wisconsin manufacturing operations

\$20B+ GRP

health care

Residents and employees have significant choices for top quality health care. Feel better faster with great value and better outcomes in all of our health care centers.

78,527

direct patient care and bio-health careers

\$6.6B GRP

transportation & logistics

The Region hosts the 18th largest employment concentration in the transportation and logistics industry in the United States.

1,355

companies

24,039

direct employment positions

\$3.3B

in direct annual sales within the Region

supporting industries – construction, finance & insurance

Industries that support entrepreneurs, second stage companies and multi-billion dollar enterprises.

5,021

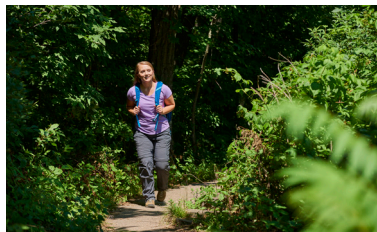
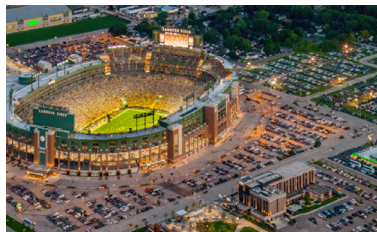
establishments

66,849

careers

\$10.6B GRP

live, work, play



New North, Inc.
2740 W. Mason St., Suite BT344 | Green Bay, WI 54303
P: (920) 336-3860

Barb LaMue, *President & CEO*
C: (920) 676-1960

For more information visit www.thenewnorth.com/site-selectors

WISCONSIN
ECONOMIC DEVELOPMENT

